

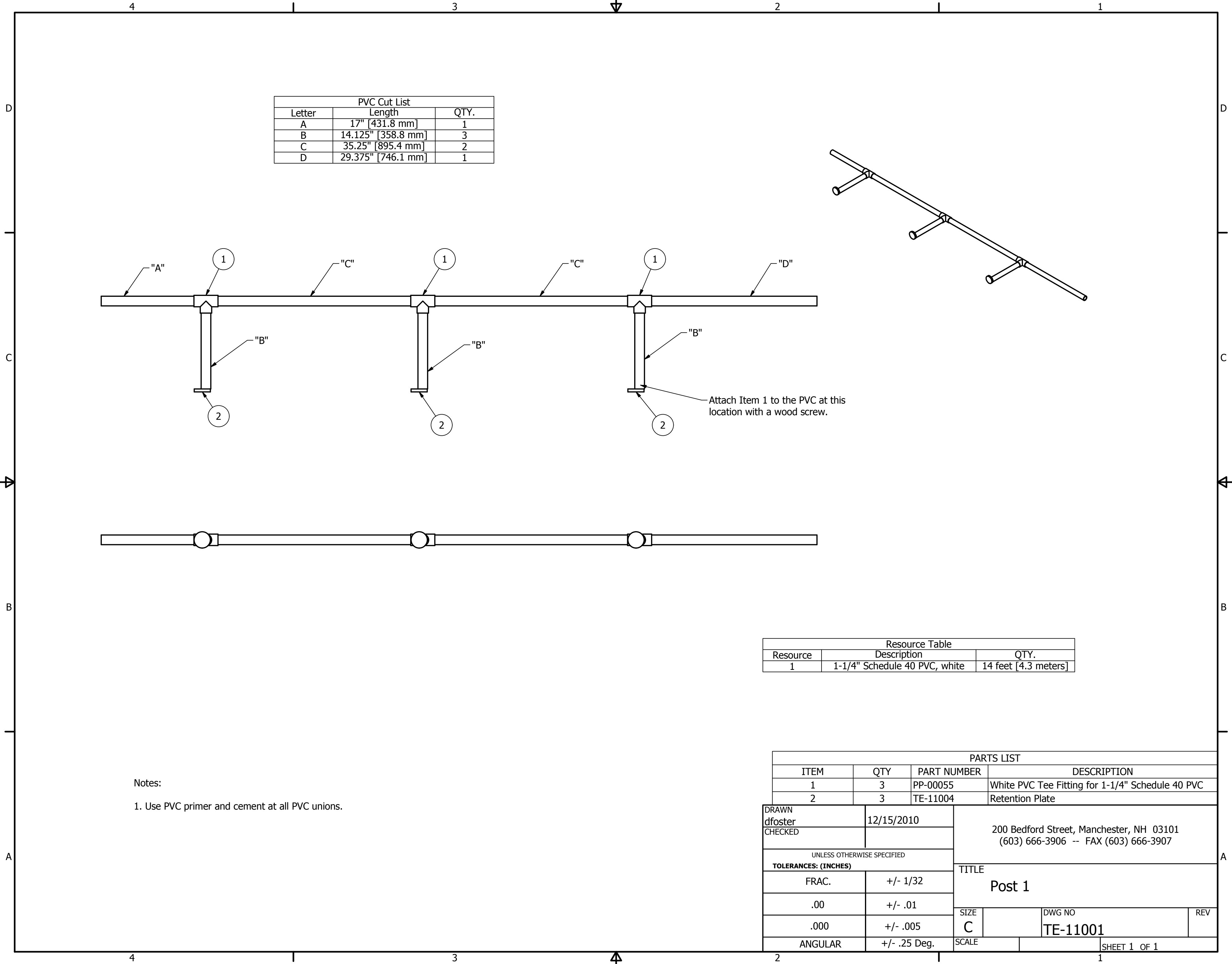
PVC Cut List		
Letter	Length	QTY.
A	16.875" [428.6 mm]	1
B	14.125" [358.8 mm]	3
C	35.25" [895.4 mm]	2
D	37.375" [949.3 mm]	1

Resource Table		
Resource	Description	QTY.
1	1-1/4" Schedule 40 PVC, white	14 feet [4.3 meters]

Notes:

1. Use PVC primer and cement at all PVC unions.

PARTS LIST					
ITEM	QTY	PART NUMBER	DESCRIPTION		
1	3	PP-00055	White PVC Tee Fitting for 1-1/4" Schedule 40 PVC		
2	3	TE-11004	Retention Plate		
DRAWN dfoster		12/15/2010	200 Bedford Street, Manchester, NH 03101 (603) 666-3906 -- FAX (603) 666-3907		
CHECKED					
UNLESS OTHERWISE SPECIFIED		TITLE  Post 3			
TOLERANCES: (INCHES)					
FRAC.	+/- 1/32	SIZE C	DWG NO TE-11000	REV	
.00	+/- .01				
.000	+/- .005				
ANGULAR	+/- .25 Deg.	SCALE		SHEET 1 OF 1	



PVC Cut List		
Letter	Length	QTY.
A	17" [431.8 mm]	1
B	14.125" [358.8 mm]	3
C	35.25" [895.4 mm]	2
D	29.375" [746.1 mm]	1

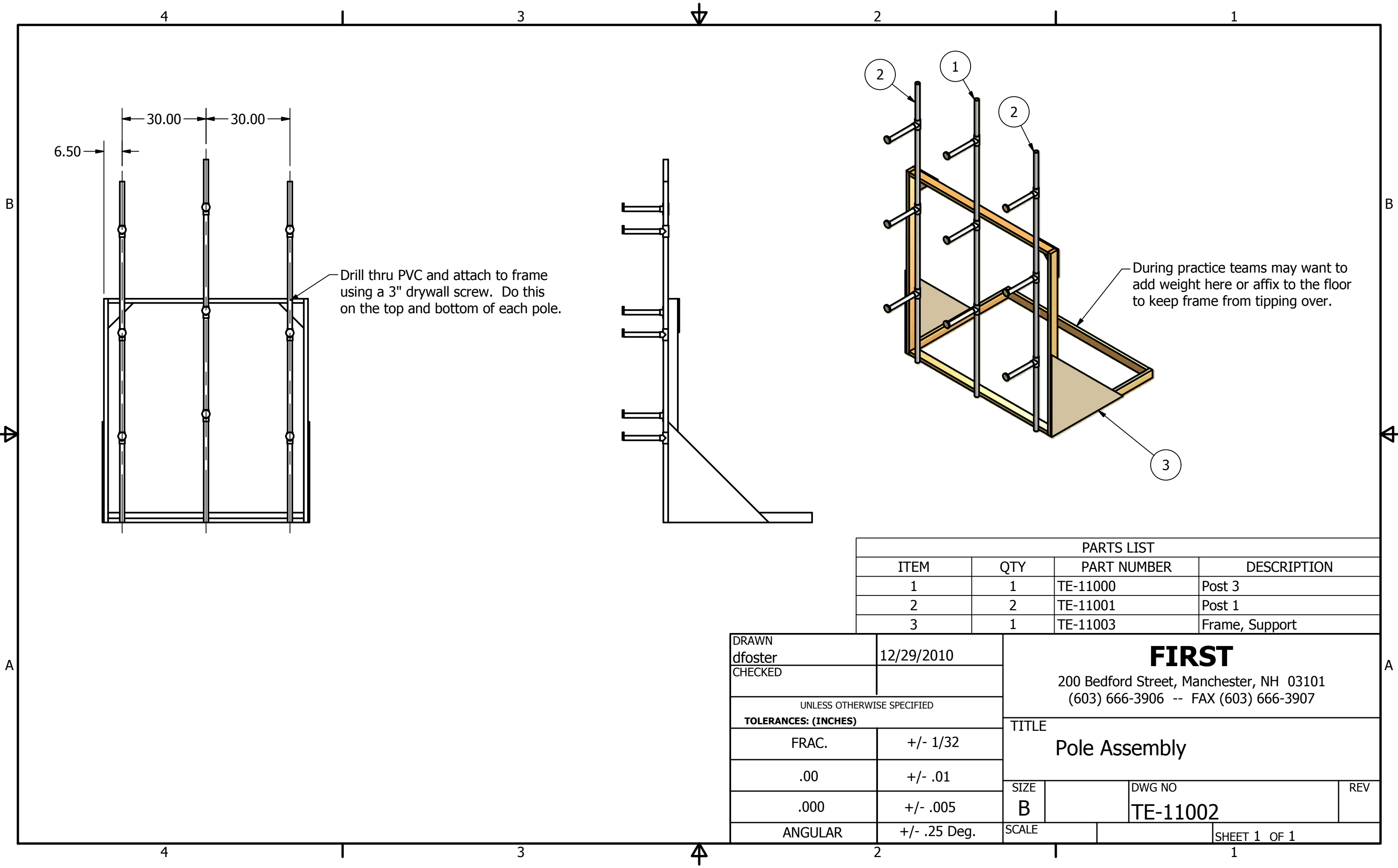
Resource Table		
Resource	Description	QTY.
1	1-1/4" Schedule 40 PVC, white	14 feet [4.3 meters]

PARTS LIST				
ITEM	QTY	PART NUMBER	DESCRIPTION	
1	3	PP-00055	White PVC Tee Fitting for 1-1/4" Schedule 40 PVC	
2	3	TE-11004	Retention Plate	

DRAWN dfoster		12/15/2010		200 Bedford Street, Manchester, NH 03101 (603) 666-3906 -- FAX (603) 666-3907		
CHECKED						
UNLESS OTHERWISE SPECIFIED				TITLE  Post 1		
TOLERANCES: (INCHES)						
FRAC.		+/- 1/32		SIZE  C	DWG NO  TE-11001	REV
.00		+/- .01				
.000		+/- .005				
ANGULAR		+/- .25 Deg.				
		SCALE		SHEET 1 OF 1		

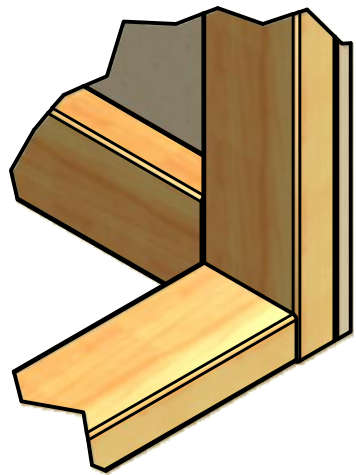
Notes:

1. Use PVC primer and cement at all PVC unions.

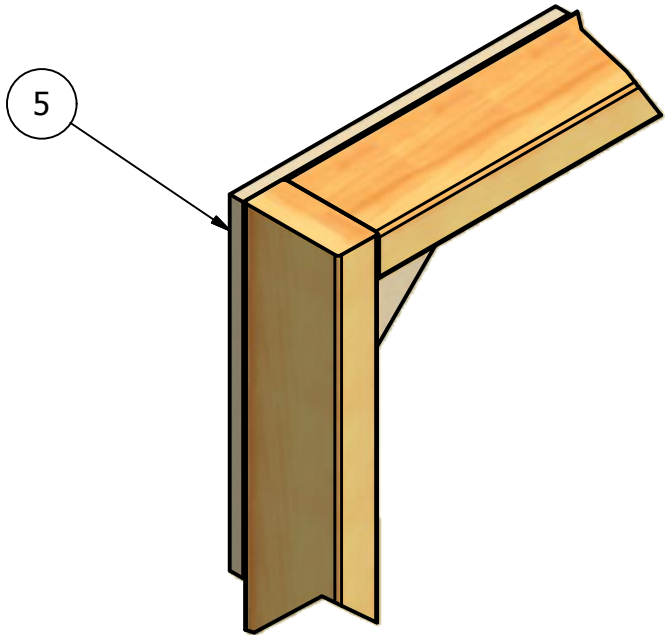


PARTS LIST			
ITEM	QTY	PART NUMBER	DESCRIPTION
1	1	TE-11000	Post 3
2	2	TE-11001	Post 1
3	1	TE-11003	Frame, Support

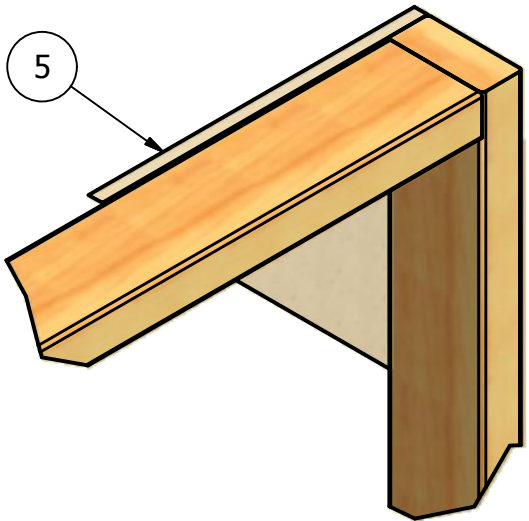
DRAWN dfoster		12/29/2010		<div>FIRST</div> <div>200 Bedford Street, Manchester, NH 03101 (603) 666-3906 -- FAX (603) 666-3907</div>			
CHECKED							
UNLESS OTHERWISE SPECIFIED							
TOLERANCES: (INCHES)				TITLE  Pole Assembly			
FRAC.		+/- 1/32					
.00		+/- .01					
.000		+/- .005		SIZE	DWG NO		REV
				B	TE-11002		
ANGULAR		+/- .25 Deg.		SCALE		SHEET 1 OF 1	



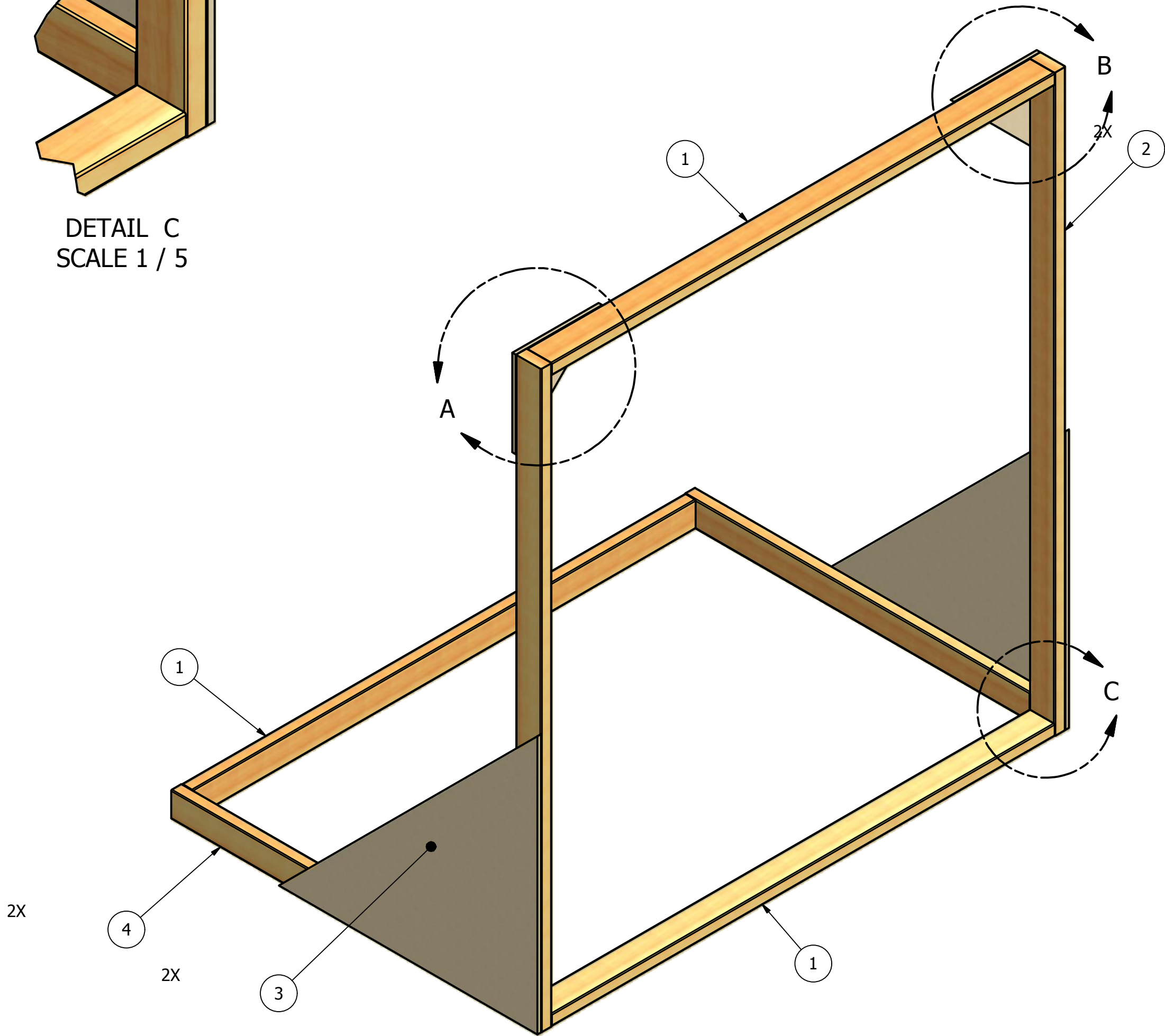
DETAIL C  
SCALE 1 / 5



DETAIL A  
SCALE 1 / 5



DETAIL B  
SCALE 1 / 5

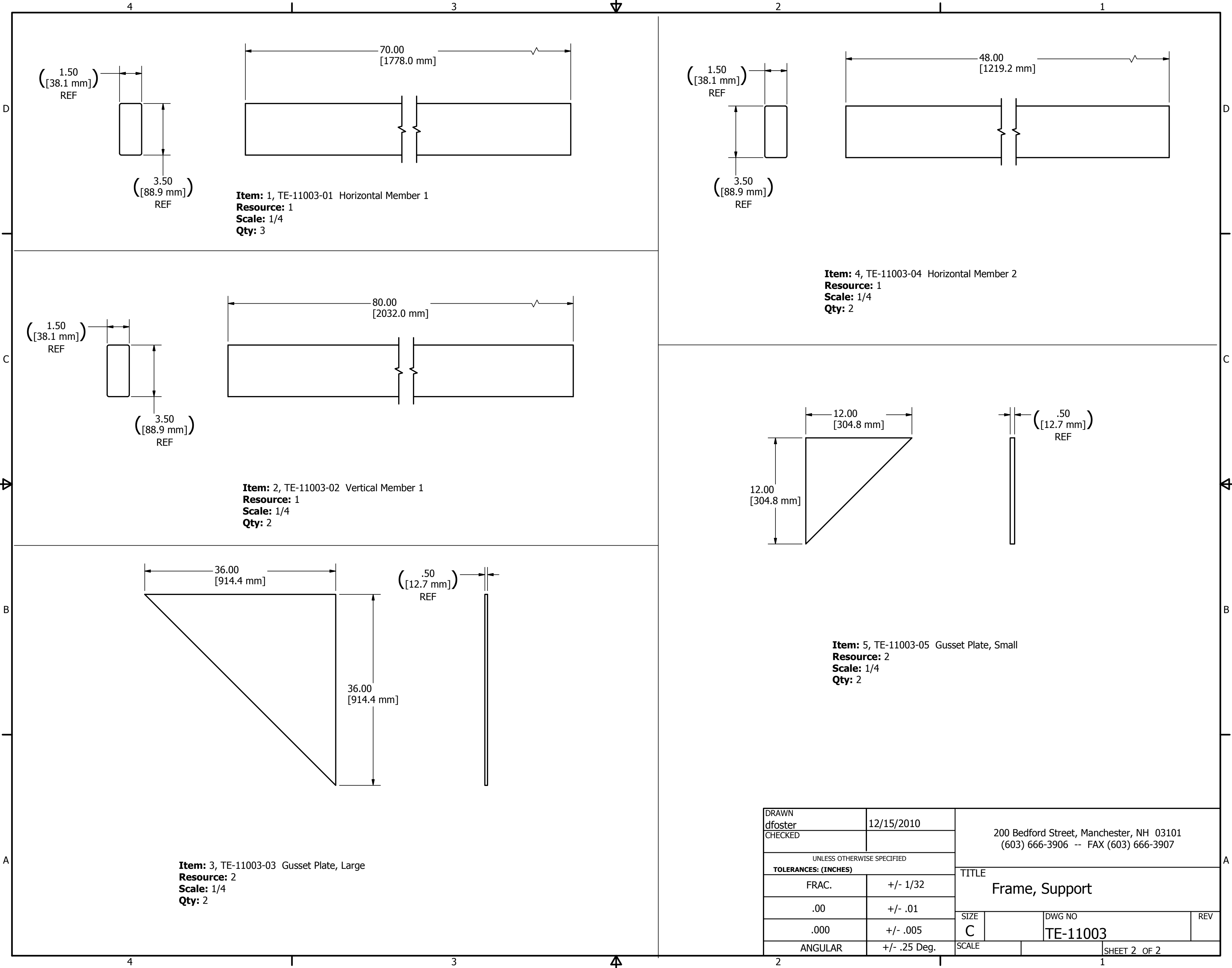


Resources		
Resource	Description	QTY.
1	2"x4"x8' Pine Board	6
2	1/2" thk Plywood	AR

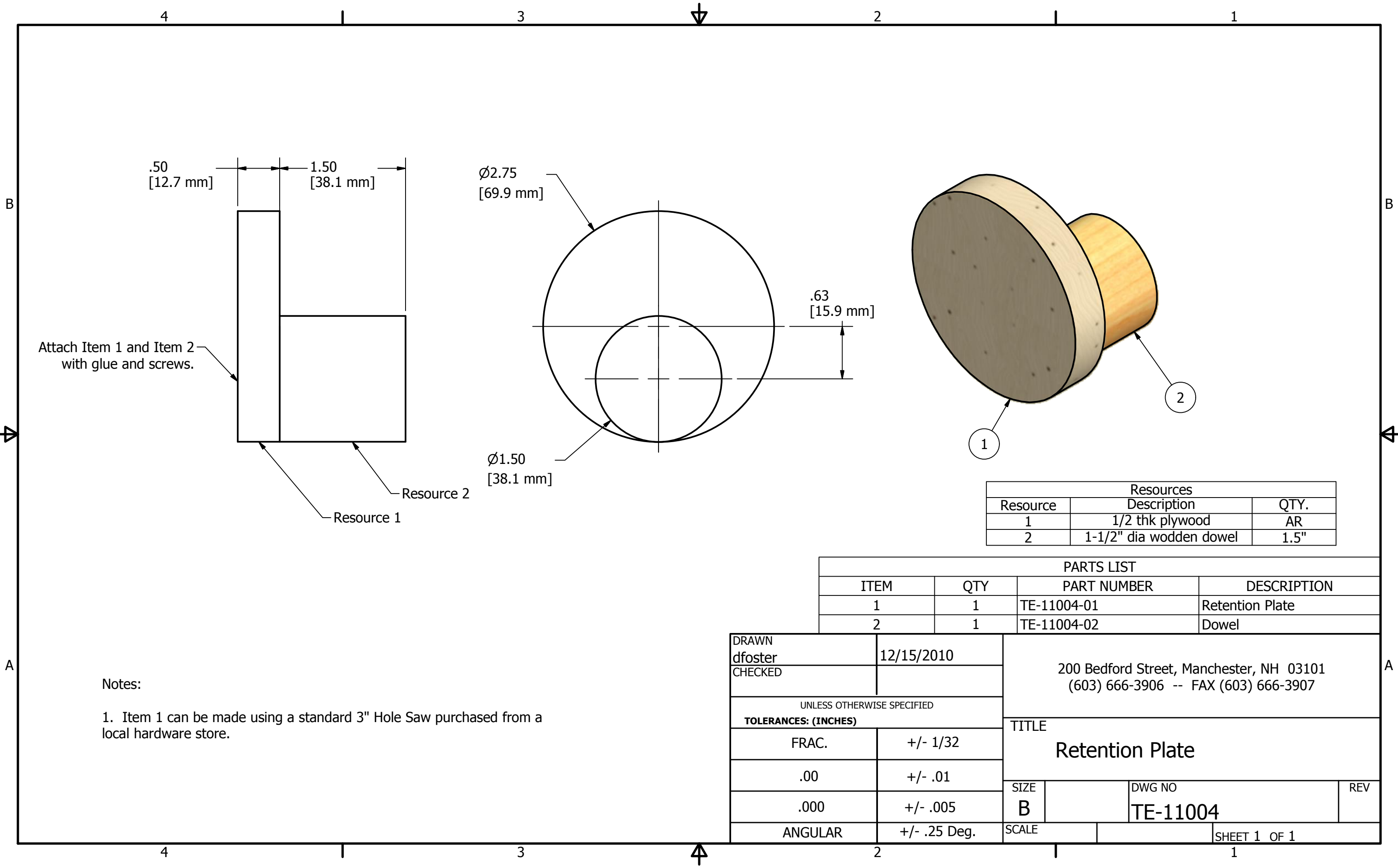
PARTS LIST			
ITEM	QTY	PART NUMBER	DESCRIPTION
1	3	TE-11003-01	Horizontal Member 1
2	2	TE-11003-02	Vertical Member
3	2	TE-11003-03	Gusset Plate, Large
4	2	TE-11003-04	Horizontal Member 2
5	2	TE-11003-05	Gusset Plate, Small

Notes:  
1. Glue and Screw all components together.

DRAWN dfoster		12/15/2010		200 Bedford Street, Manchester, NH 03101 (603) 666-3906 -- FAX (603) 666-3907			
CHECKED							
UNLESS OTHERWISE SPECIFIED <b>TOLERANCES: (INCHES)</b>				TITLE  Frame, Support			
FRAC.		+/- 1/32					
.00		+/- .01					
.000		+/- .005		SIZE	DWG NO		REV
ANGULAR		+/- .25 Deg.		C	TE-11003		
				SCALE		SHEET 1 OF 2	



DRAWN dfoster		12/15/2010		200 Bedford Street, Manchester, NH 03101 (603) 666-3906 -- FAX (603) 666-3907			
CHECKED							
UNLESS OTHERWISE SPECIFIED				TITLE  Frame, Support			
TOLERANCES: (INCHES)							
FRAC.		+/- 1/32					
.00		+/- .01					
.000		+/- .005		SIZE	DWG NO		REV
ANGULAR		+/- .25 Deg.		C	TE-11003		
				SCALE		SHEET 2 OF 2	



Attach Item 1 and Item 2  
with glue and screws.

Resource 2

Resource 1

Notes:

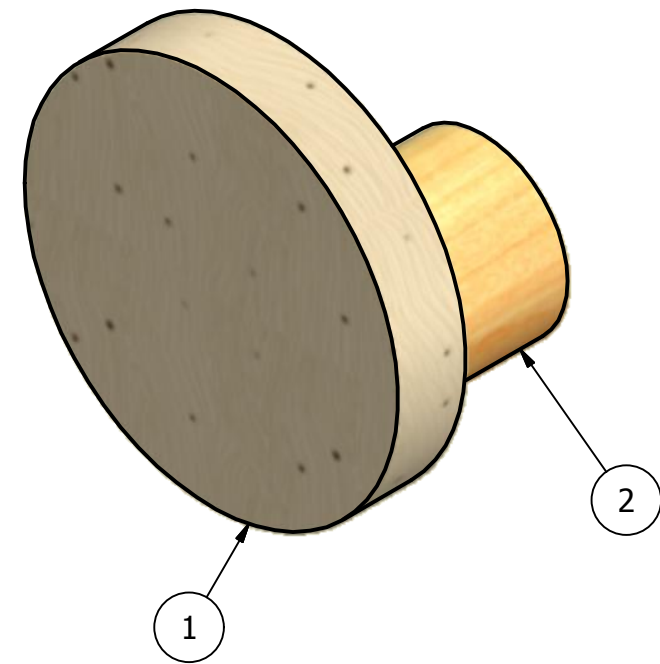
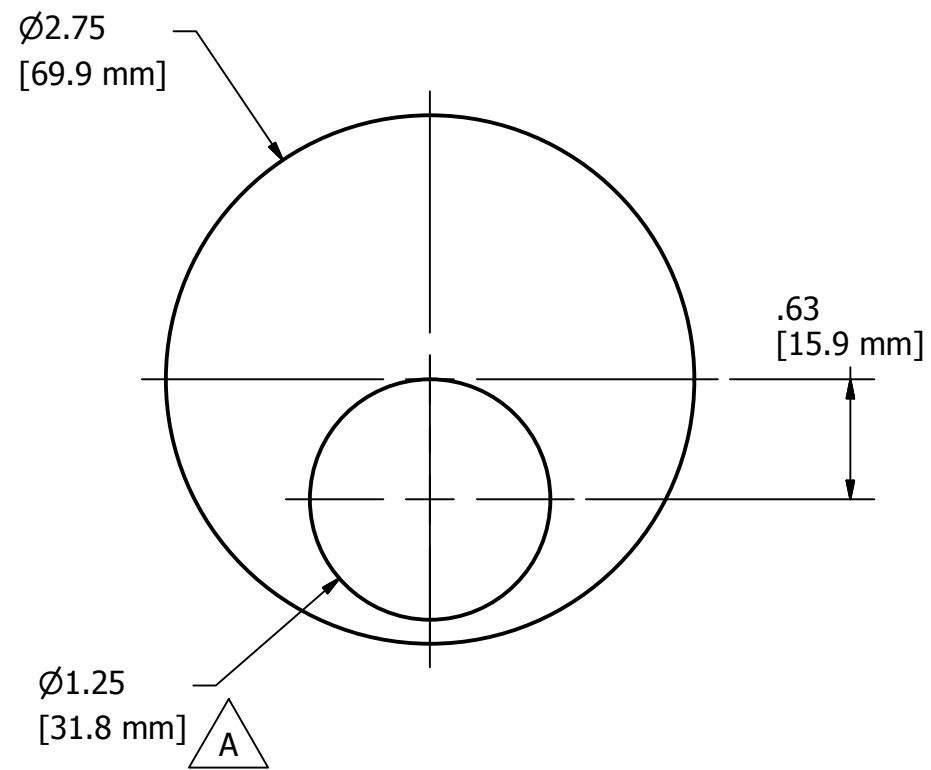
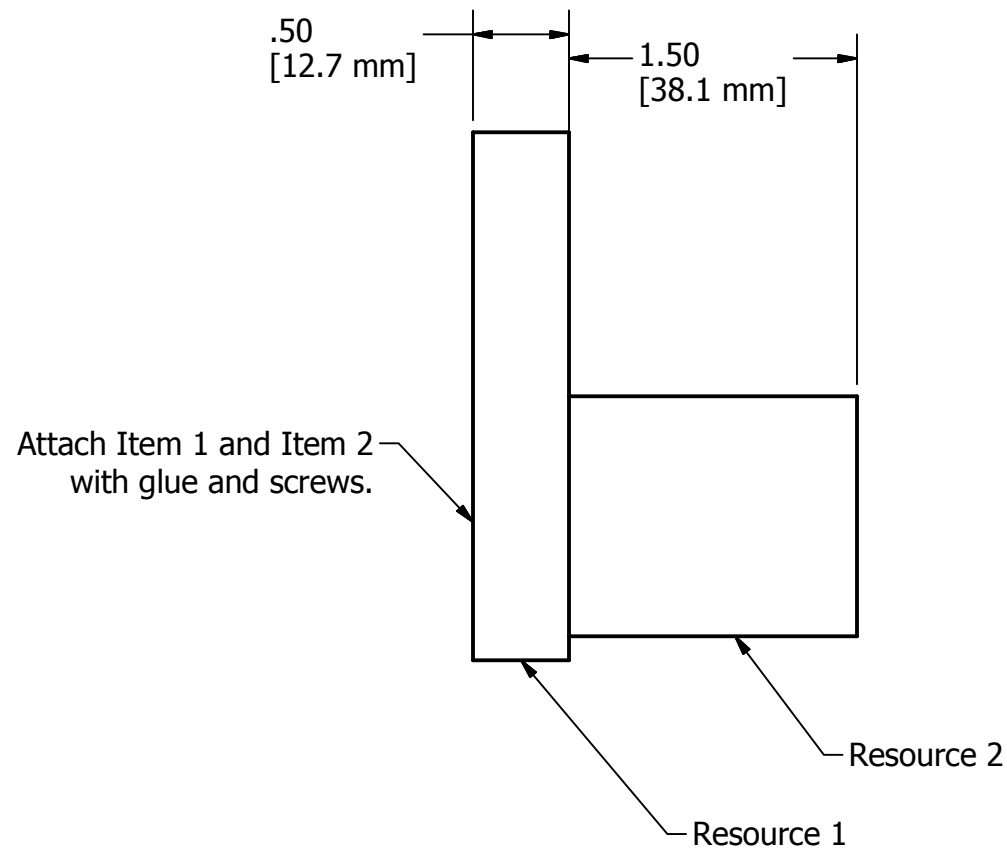
1. Item 1 can be made using a standard 3" Hole Saw purchased from a local hardware store.

Resources		
Resource	Description	QTY.
1	1/2 thk plywood	AR
2	1-1/2" dia wodden dowel	1.5"

PARTS LIST			
ITEM	QTY	PART NUMBER	DESCRIPTION
1	1	TE-11004-01	Retention Plate
2	1	TE-11004-02	Dowel

DRAWN dfoster		12/15/2010		200 Bedford Street, Manchester, NH 03101 (603) 666-3906 -- FAX (603) 666-3907					
CHECKED									
UNLESS OTHERWISE SPECIFIED									
TOLERANCES: (INCHES)				TITLE  Retention Plate					
FRAC.		+/- 1/32							
.00		+/- .01							
.000		+/- .005		SIZE		DWG NO		REV	
				B		TE-11004			
ANGULAR		+/- .25 Deg.		SCALE				SHEET 1 OF 1	

REVISION HISTORY				
ZONE	REV	DESCRIPTION	DATE	APPROVED
A-2, A-3	A	1-1/4" was 1-1/2", 1.25 was 1.5	12/20/2010	DAF



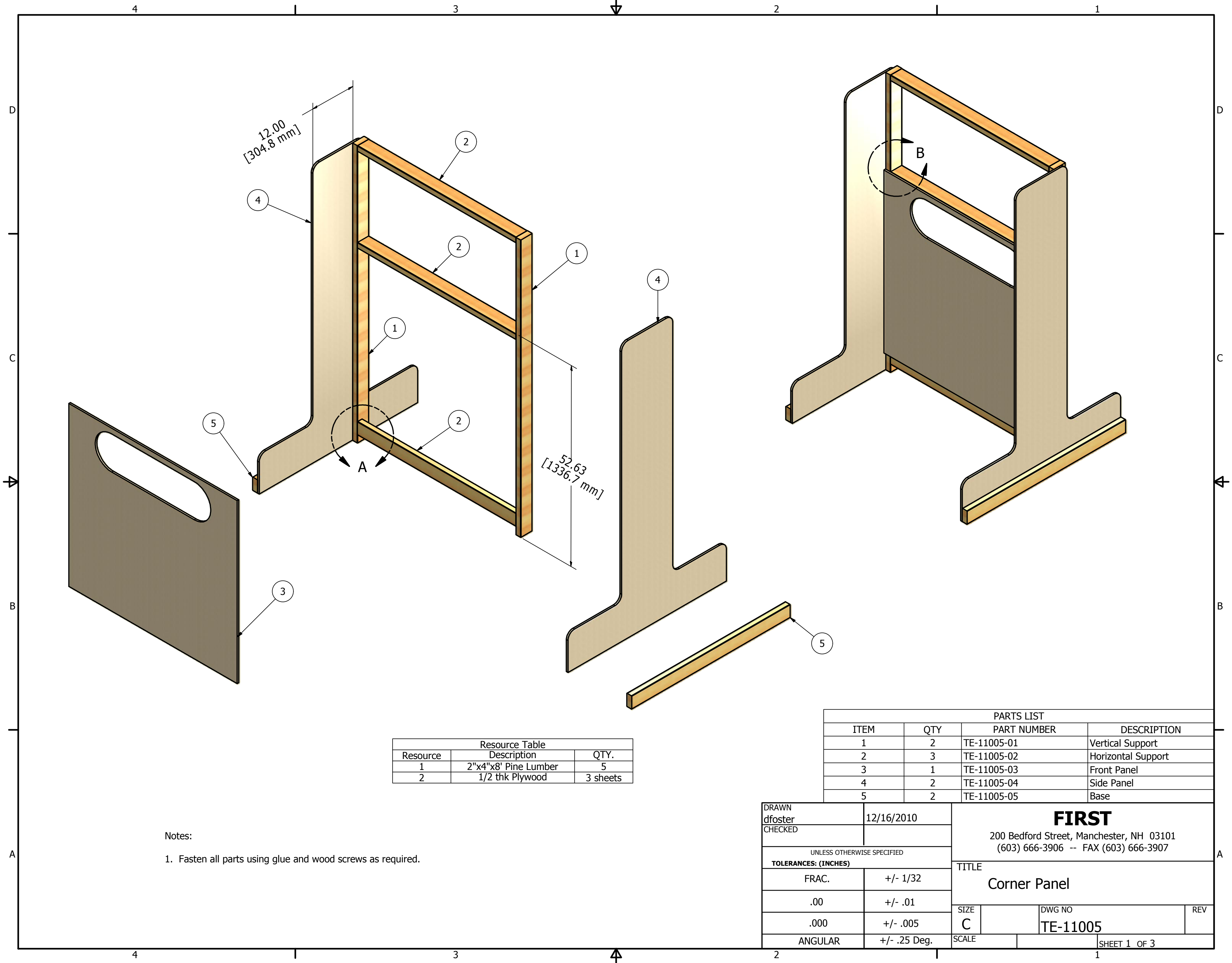
Resources		
Resource	Description	QTY.
1	1/2 thk plywood	AR
2	1-1/4" dia wodden dowel	1.5"

PARTS LIST			
ITEM	QTY	PART NUMBER	DESCRIPTION
1	1	TE-11004-01	Retention Plate
2	1	TE-11004-02	Dowel

DRAWN dfoster		12/15/2010		200 Bedford Street, Manchester, NH 03101 (603) 666-3906 -- FAX (603) 666-3907			
CHECKED							
UNLESS OTHERWISE SPECIFIED <b>TOLERANCES: (INCHES)</b>							
FRAC.		+/- 1/32		TITLE  Retention Plate			
.00		+/- .01					
.000		+/- .005					
ANGULAR		+/- .25 Deg.		SIZE <b>B</b>		DWG NO <b>TE-11004</b>	REV
				SCALE		SHEET 1 OF 1	

Notes:

- Item 1 can be made using a standard 3" Hole Saw purchased from a local hardware store.

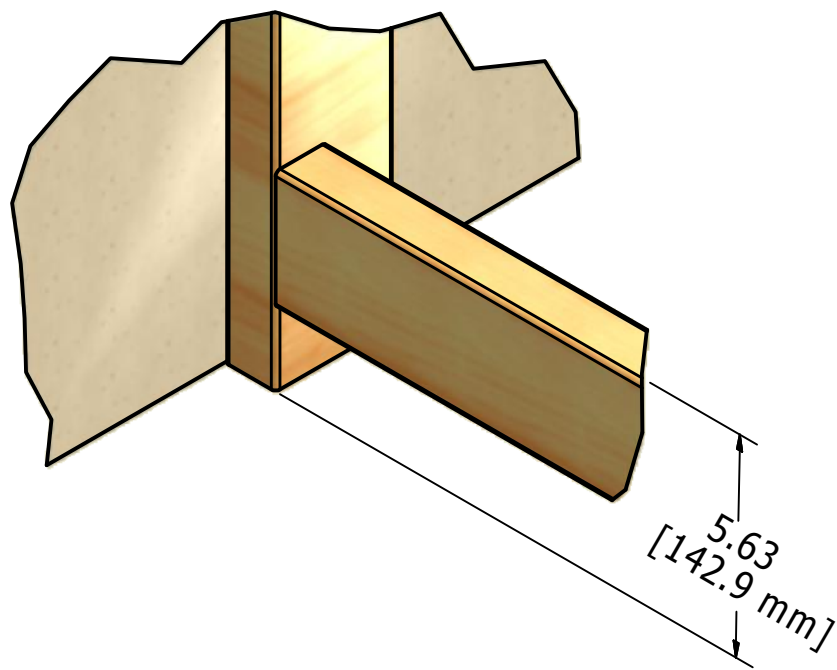


Resource Table		
Resource	Description	QTY.
1	2"x4"x8' Pine Lumber	5
2	1/2 thk Plywood	3 sheets

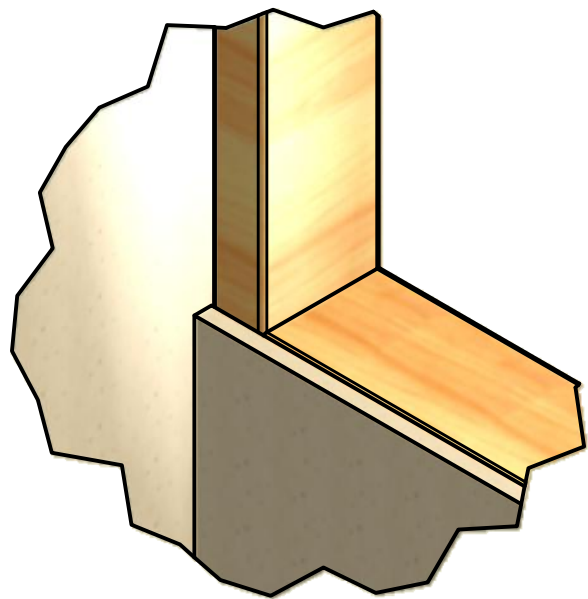
PARTS LIST			
ITEM	QTY	PART NUMBER	DESCRIPTION
1	2	TE-11005-01	Vertical Support
2	3	TE-11005-02	Horizontal Support
3	1	TE-11005-03	Front Panel
4	2	TE-11005-04	Side Panel
5	2	TE-11005-05	Base

Notes:  
1. Fasten all parts using glue and wood screws as required.

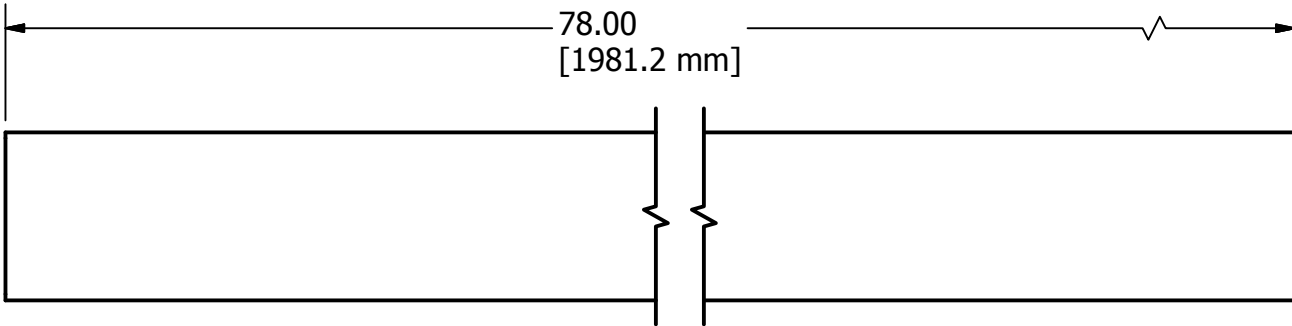
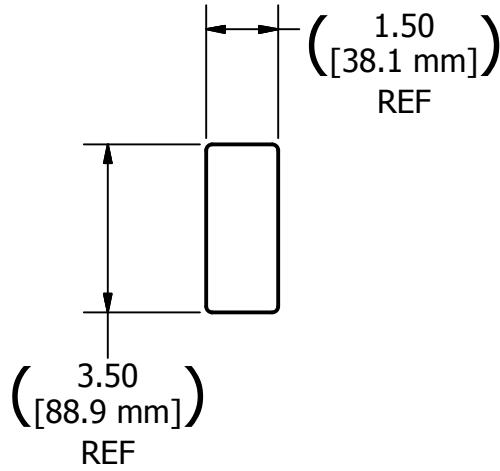
DRAWN dfoster		12/16/2010		<div>FIRST</div> <div>200 Bedford Street, Manchester, NH 03101 (603) 666-3906 -- FAX (603) 666-3907</div>			
CHECKED							
UNLESS OTHERWISE SPECIFIED				TITLE <div>Corner Panel</div>			
TOLERANCES: (INCHES)							
FRAC.		+/- 1/32		SIZE C			
.00		+/- .01					
.000		+/- .005					
ANGULAR		+/- .25 Deg.		SCALE		REV	
						DWG NO TE-11005	
				SHEET 1		OF 3	



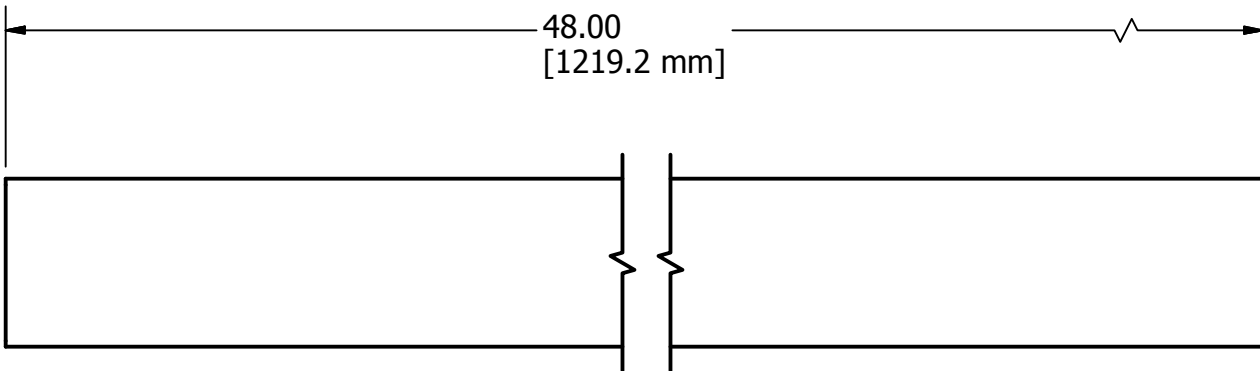
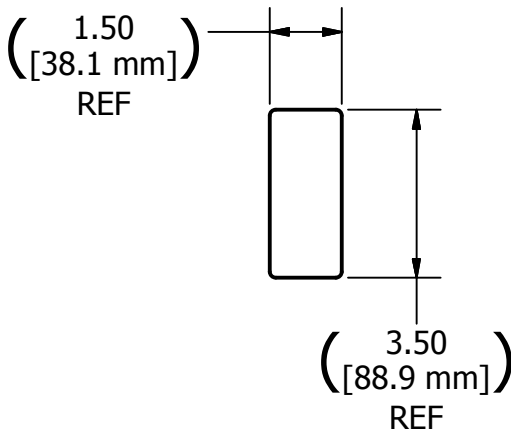
DETAIL A  
SCALE 1 / 4



DETAIL B  
SCALE 1 / 4

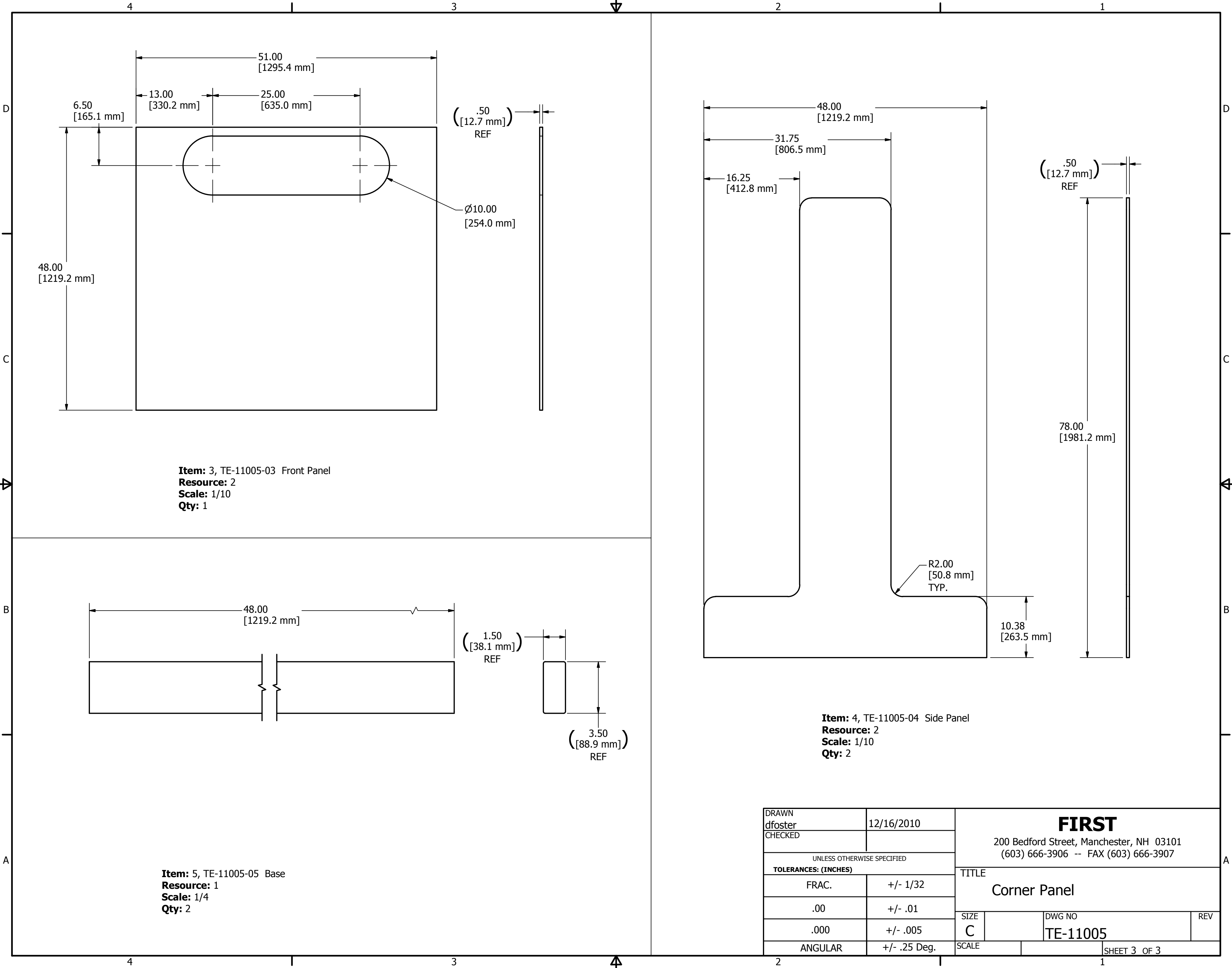


Item: 1, TE-11005-01 Vertical Support  
Resource: 1  
Scale: 1/4  
Qty: 2



Item: 2, TE-11005-02 Horizontal Support  
Resource: 1  
Scale: 1/4  
Qty: 3

DRAWN dfoster		12/16/2010		<div>FIRST</div> <div>200 Bedford Street, Manchester, NH 03101 (603) 666-3906 -- FAX (603) 666-3907</div>			
CHECKED							
UNLESS OTHERWISE SPECIFIED				<div>TITLE</div> <div>Corner Panel</div>			
TOLERANCES: (INCHES)							
FRAC.		+/- 1/32					
.00		+/- .01					
.000		+/- .005					
ANGULAR		+/- .25 Deg.		SIZE		DWG NO	REV
				C		TE-11005	
				SCALE			SHEET 2 OF 3



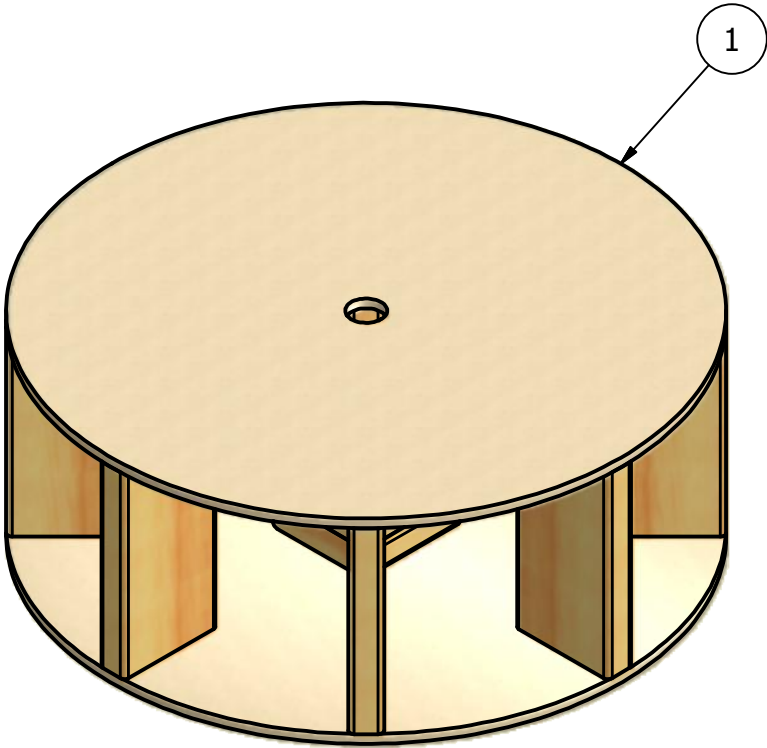
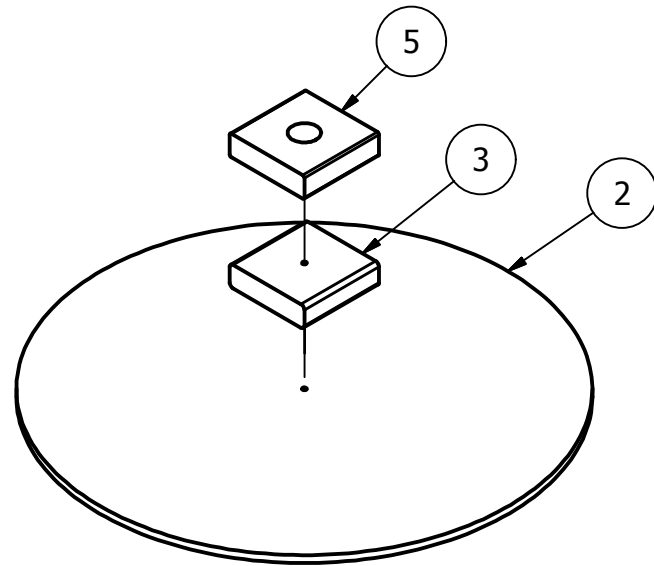


TABLE		
Resources	Description	Qty.
1	1/2" thk Plywood	1 sheet
2	2"x6"x8' Pine Lumber	2

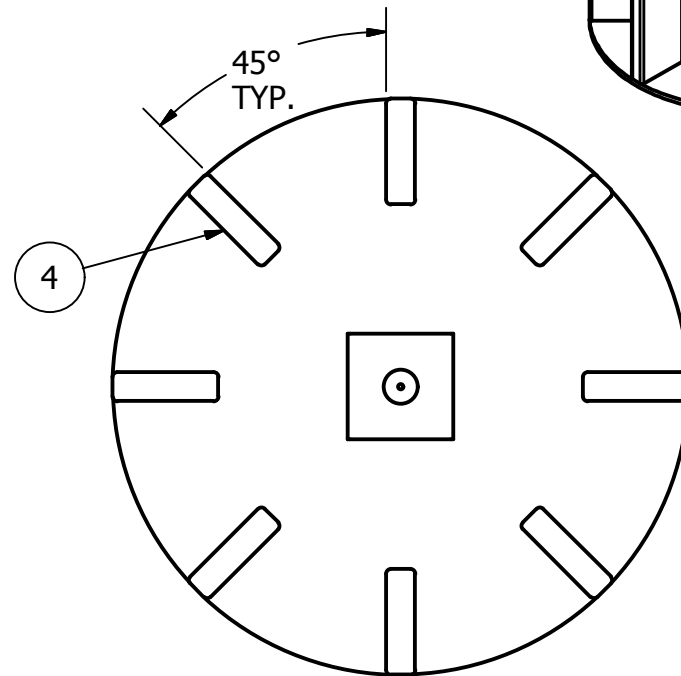
PARTS LIST			
ITEM	QTY	PART NUMBER	DESCRIPTION
1	1	TE-11006-01	Base Top
2	1	TE-11006-02	Base Bottom
3	1	TE-11006-03	Bottom Block
4	8	TE-11006-04	Base Supports
5	1	TE-11006-05	Top Block

DRAWN dfoster		12/16/2010		<div>FIRST</div> <div>200 Bedford Street, Manchester, NH 03101 (603) 666-3906 -- FAX (603) 666-3907</div>			
CHECKED							
UNLESS OTHERWISE SPECIFIED				TITLE  Base			
TOLERANCES: (INCHES)							
FRAC.		+/- 1/32					
.00		+/- .01		SIZE B			
.000		+/- .005					
ANGULAR		+/- .25 Deg.					
				SCALE		SHEET 1 OF 4	
				DWG NO TE-11006		REV	



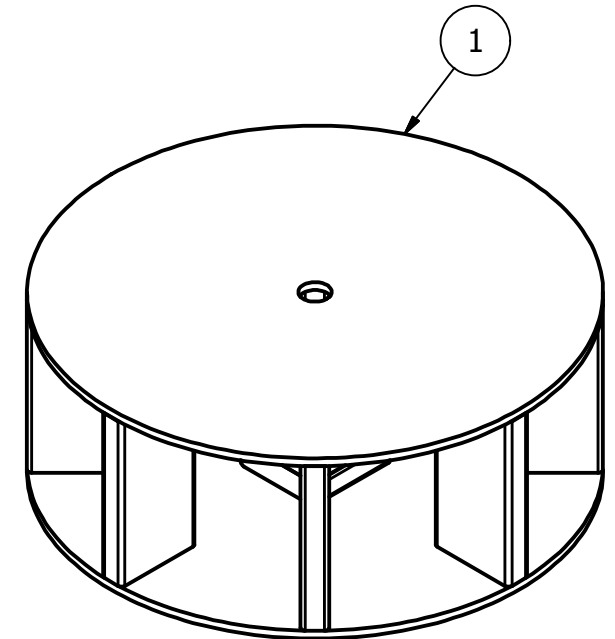
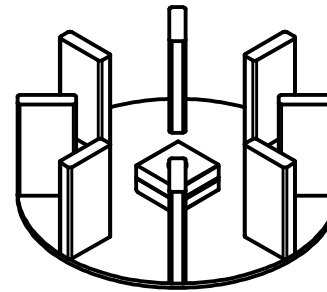
#### Assembly Notes:

1. Align Item 3 to Item 2 using the 1/4" dia holes.
2. Then align Item 5 to Item 3 by aligning the sides of the blocks
3. Fasten all components together with glue and wood screws.
4. Use at least 4 screws going through each block.



#### Assembly Notes:

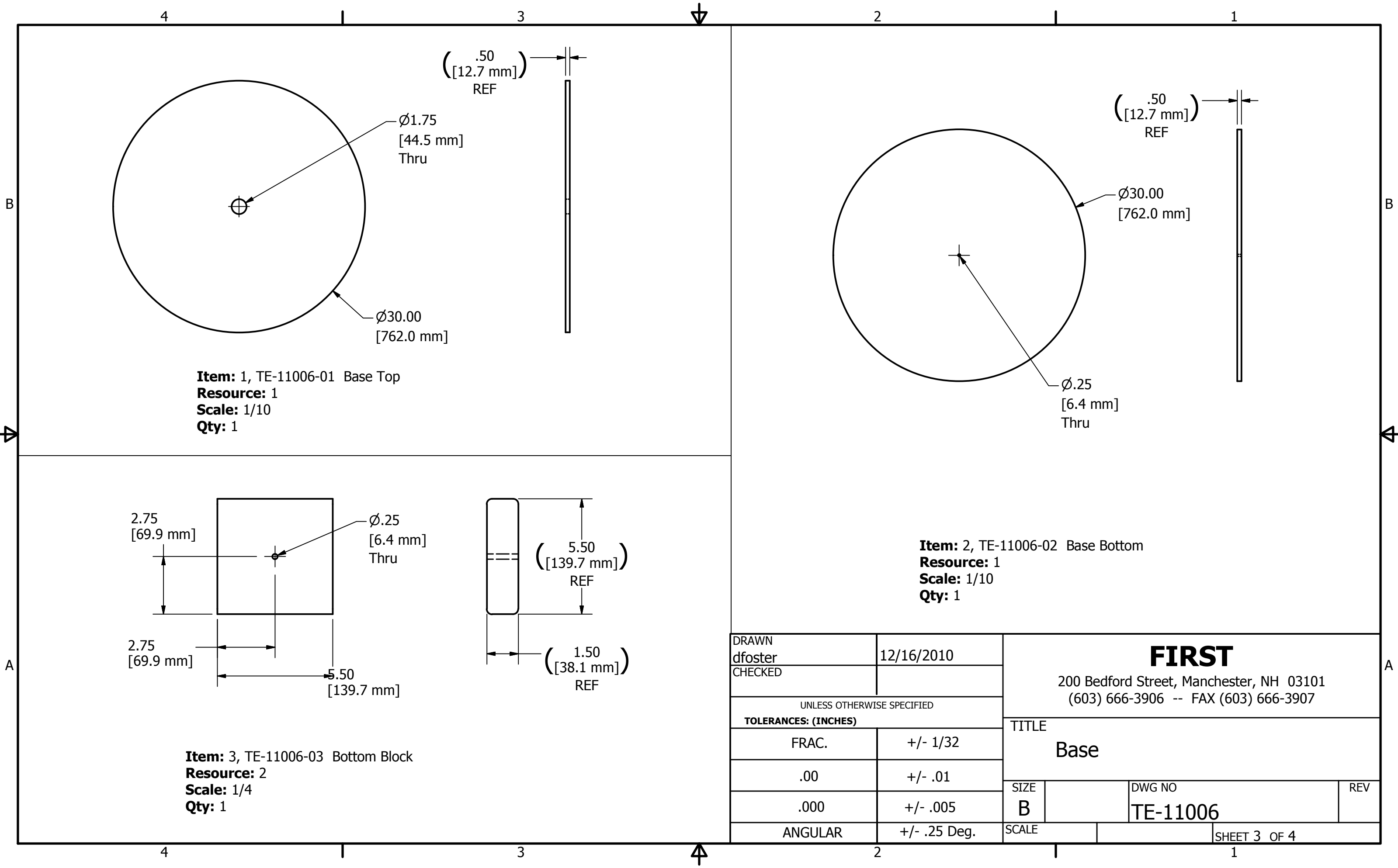
1. Space all eight of Item 4 evenly about the circle. Spacing is not crucial but should be close
2. All of Item 4 should be positioned so that edge is tangent to Item 2.
3. Fasten all components together with glue and wood screws.
4. Use 3 screws per support.

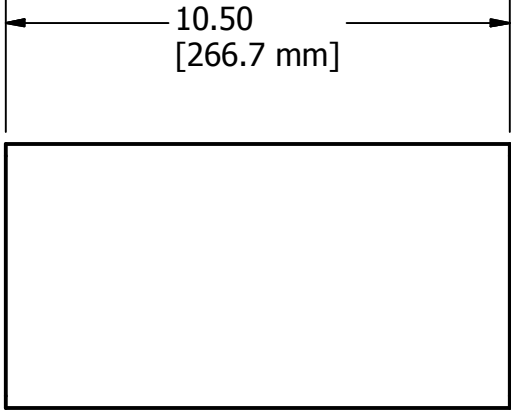


#### Assembly Notes:

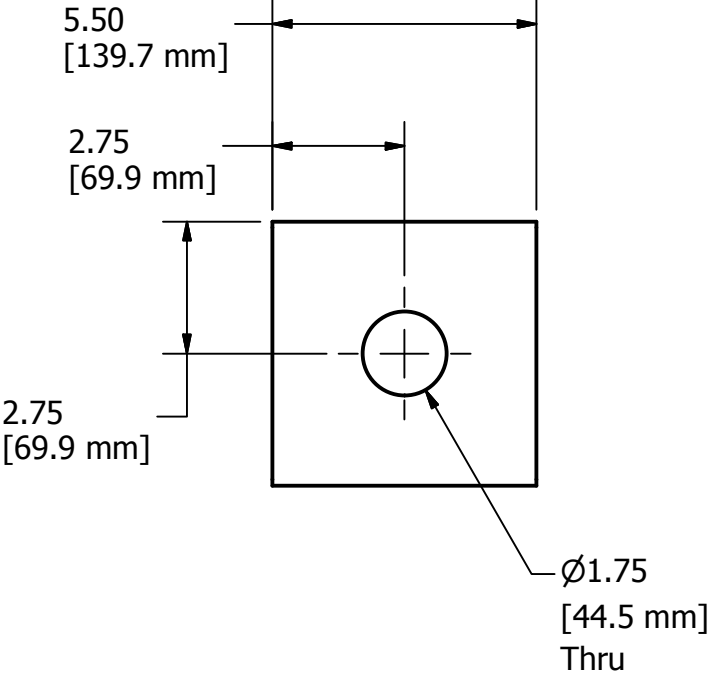
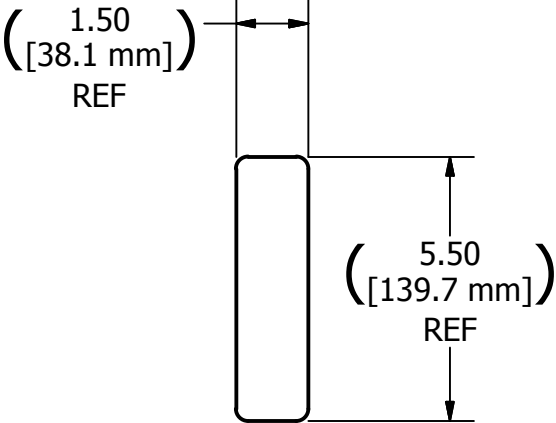
1. Align Item 1 to the supports below it. Check to make sure the hole in Item 1 is positioned directly above the hole in Item 5.
3. Fasten all components together with glue and wood screws.
4. Use at least 3 screws per support

DRAWN dfoster	12/16/2010	<b>FIRST</b>  200 Bedford Street, Manchester, NH 03101 (603) 666-3906 -- FAX (603) 666-3907			
CHECKED					
UNLESS OTHERWISE SPECIFIED		TITLE  Base			
<b>TOLERANCES: (INCHES)</b>					
FRAC.	+/- 1/32				
.00	+/- .01				
.000	+/- .005	SIZE <b>B</b>		DWG NO <b>TE-11006</b>	REV
ANGULAR	+/- .25 Deg.	SCALE		SHEET 2 OF 4	

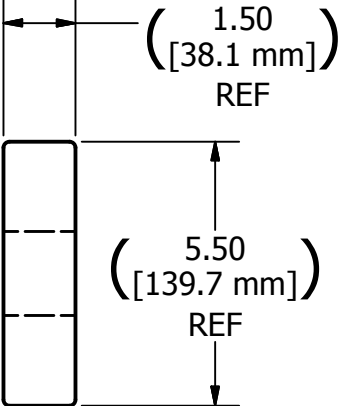




**Item:** 5, TE-11006-05 Support  
**Resource:** 2  
**Scale:** 1/4  
**Qty:** 8



**Item:** 6, TE-11006-06 Top Block  
**Resource:** 2  
**Scale:** 1/4  
**Qty:** 1



DRAWN dfoster		12/16/2010		<div>FIRST</div> <div>200 Bedford Street, Manchester, NH 03101 (603) 666-3906 -- FAX (603) 666-3907</div>			
CHECKED							
UNLESS OTHERWISE SPECIFIED <b>TOLERANCES: (INCHES)</b>							
FRAC.		+/- 1/32		TITLE  Base			
.00		+/- .01					
.000		+/- .005					
ANGULAR		+/- .25 Deg.		SIZE B		DWG NO TE-11006	REV
				SCALE		SHEET 4 OF 4	

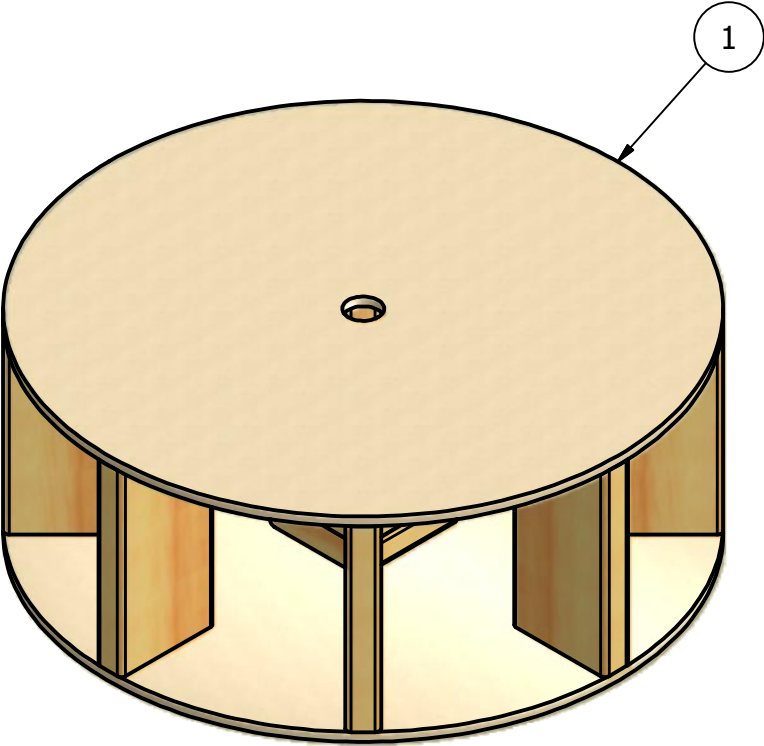
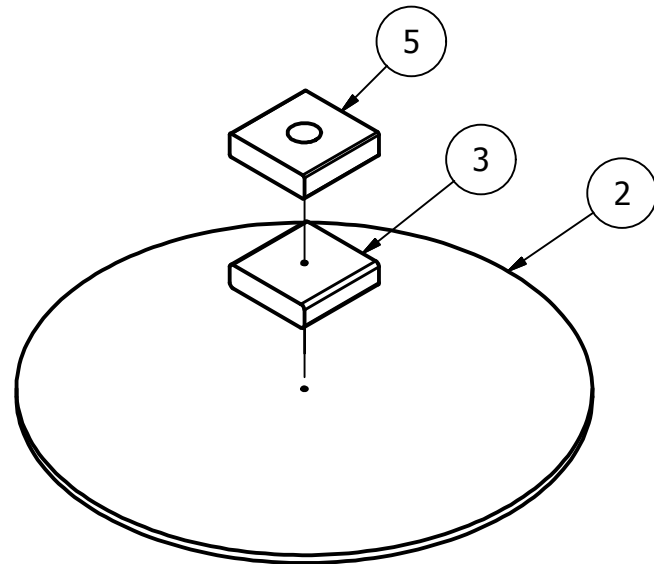


TABLE		
Resources	Description	Qty.
1	1/2" thk Plywood	1 sheet
2	2"x6"x8' Pine Lumber	2

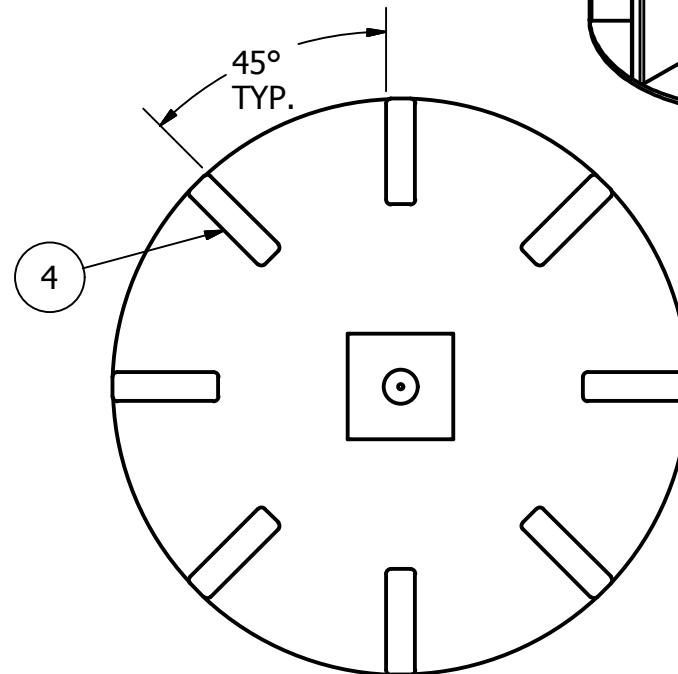
PARTS LIST			
ITEM	QTY	PART NUMBER	DESCRIPTION
1	1	TE-11006-01	Base Top
2	1	TE-11006-02	Base Bottom
3	1	TE-11006-03	Bottom Block
4	8	TE-11006-04	Base Supports
5	1	TE-11006-05	Top Block

DRAWN dfoster		12/16/2010		<div>FIRST</div> <div>200 Bedford Street, Manchester, NH 03101 (603) 666-3906 -- FAX (603) 666-3907</div>			
CHECKED							
UNLESS OTHERWISE SPECIFIED							
TOLERANCES: (INCHES)				TITLE  Base			
FRAC.		+/- 1/32					
.00		+/- .01					
.000		+/- .005		SIZE		DWG NO	REV
				B		TE-11006	A
ANGULAR		+/- .25 Deg.		SCALE			SHEET 1 OF 4



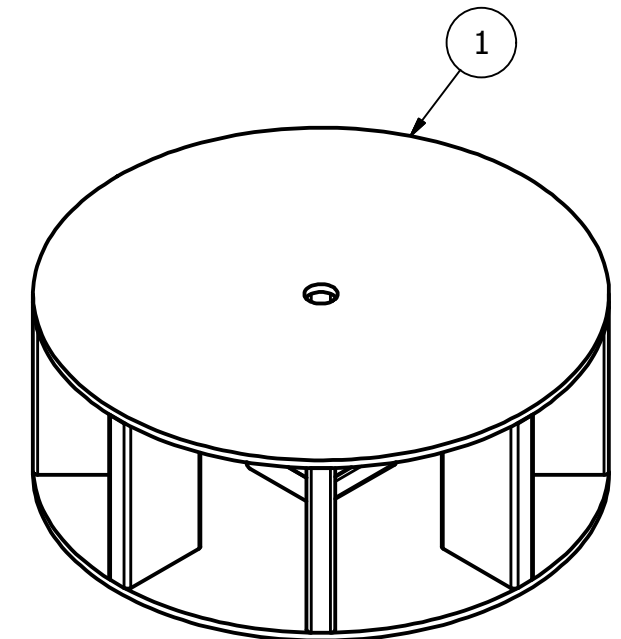
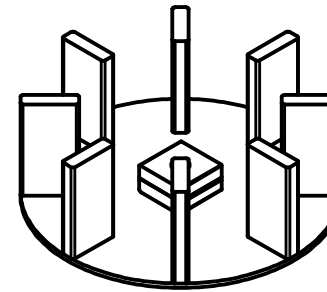
**Assembly Notes:**

1. Align Item 3 to Item 2 using the 1/4" dia holes.
2. Then align Item 5 to Item 3 by aligning the sides of the blocks
3. Fasten all components together with glue and wood screws.
4. Use at least 4 screws going through each block.



**Assembly Notes:**

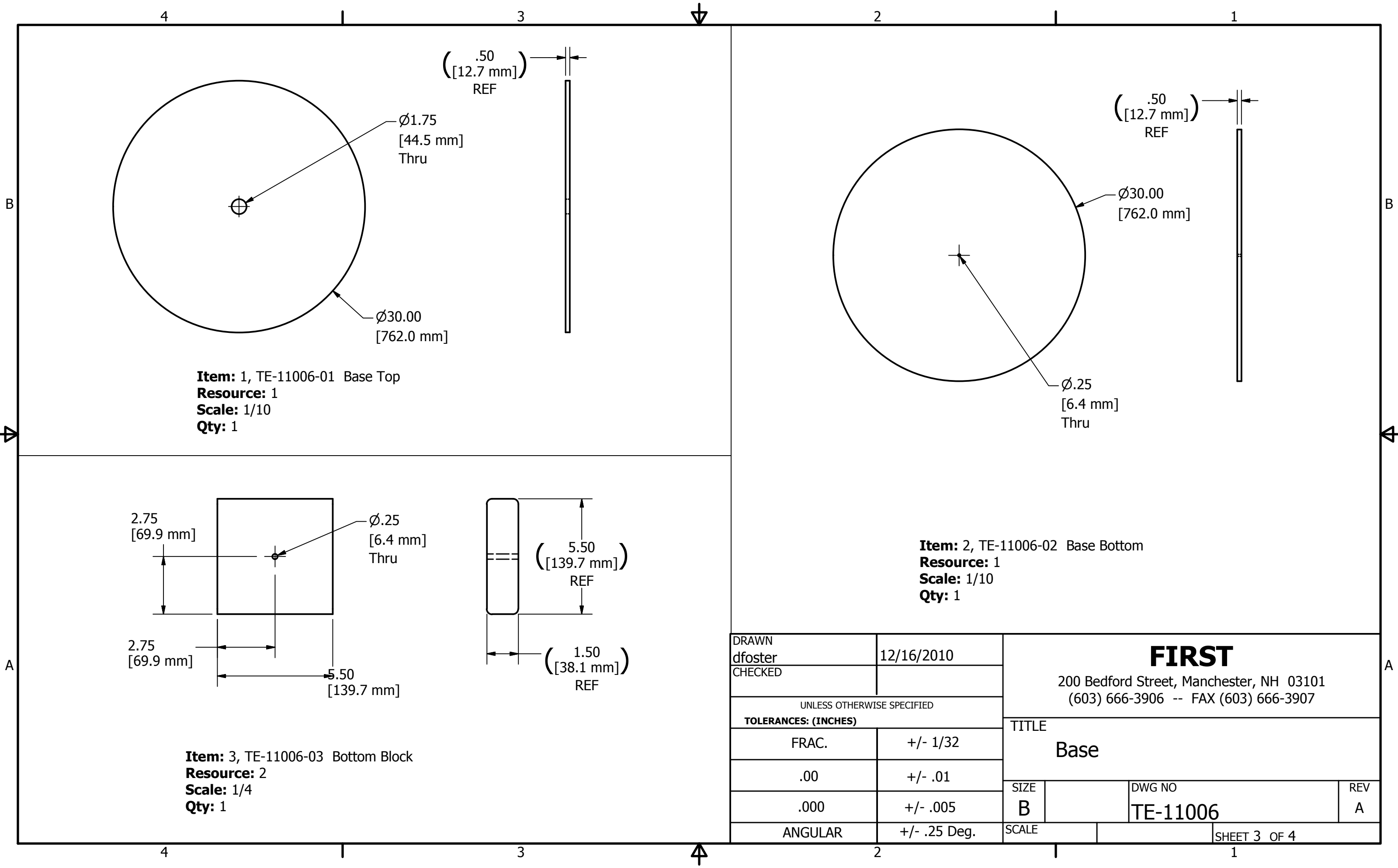
1. Space all eight of Item 4 evenly about the circle. Spacing is not crucial but should be close
2. All of Item 4 should be positioned so that edge is tangent to Item 2.
3. Fasten all components together with glue and wood screws.
4. Use 3 screws per support.



**Assembly Notes:**

1. Align Item 1 to the supports below it. Check to make sure the hole in Item 1 is positioned directly above the hole in Item 5.
3. Fasten all components together with glue and wood screws.
4. Use at least 3 screws per support

DRAWN dfoster	12/16/2010	<div>FIRST</div> <div>200 Bedford Street, Manchester, NH 03101 (603) 666-3906 -- FAX (603) 666-3907</div>			
CHECKED					
UNLESS OTHERWISE SPECIFIED		<div>TITLE</div> <div>Base</div>			
TOLERANCES: (INCHES)					
FRAC.	+/- 1/32				
.00	+/- .01	<div>SIZE</div> <div>B</div> <div>DWG NO</div> <div>TE-11006</div> <div>REV</div> <div>A</div>			
.000	+/- .005				
ANGULAR	+/- .25 Deg.	SCALE			SHEET 2 OF 4

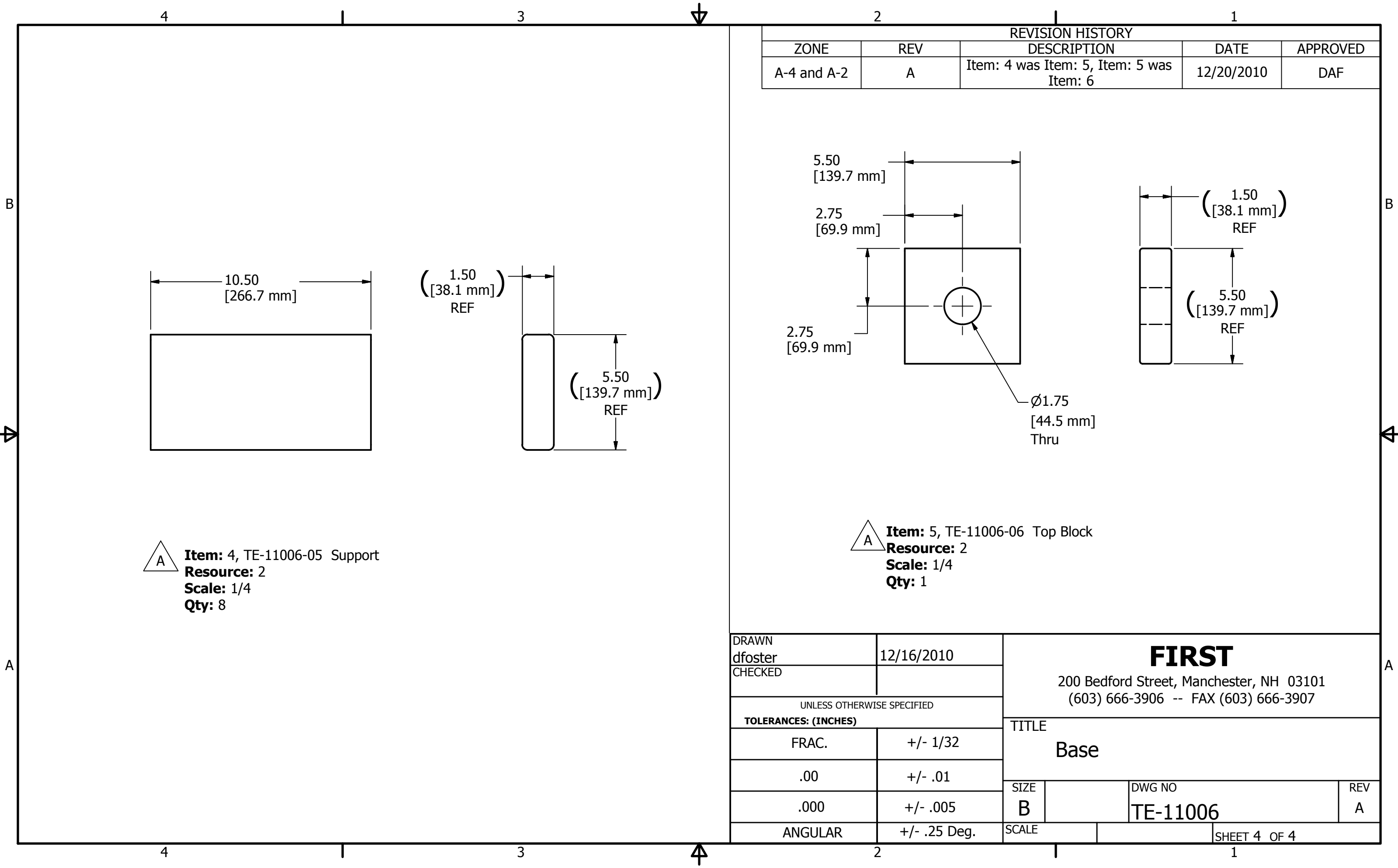


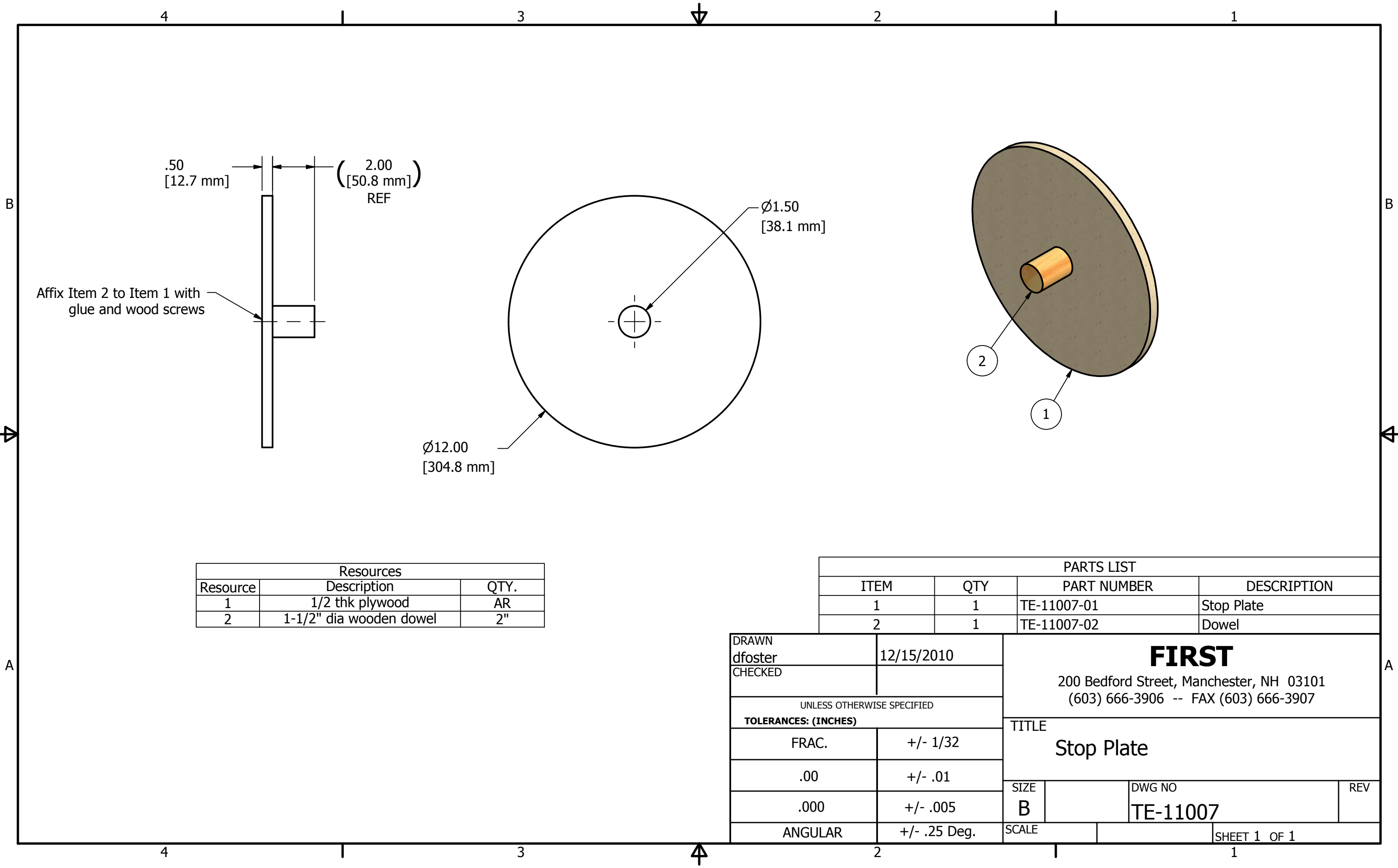
**Item:** 1, TE-11006-01 Base Top  
**Resource:** 1  
**Scale:** 1/10  
**Qty:** 1

**Item:** 2, TE-11006-02 Base Bottom  
**Resource:** 1  
**Scale:** 1/10  
**Qty:** 1

**Item:** 3, TE-11006-03 Bottom Block  
**Resource:** 2  
**Scale:** 1/4  
**Qty:** 1

DRAWN dfoster	12/16/2010	<div>FIRST</div> <div>200 Bedford Street, Manchester, NH 03101 (603) 666-3906 -- FAX (603) 666-3907</div>			
CHECKED					
UNLESS OTHERWISE SPECIFIED		TITLE  Base			
TOLERANCES: (INCHES)					
FRAC.	+/- 1/32				
.00	+/- .01	SIZE B			
.000	+/- .005				
ANGULAR	+/- .25 Deg.				
		SCALE		DWG NO TE-11006	REV A
				SHEET 3 OF 4	

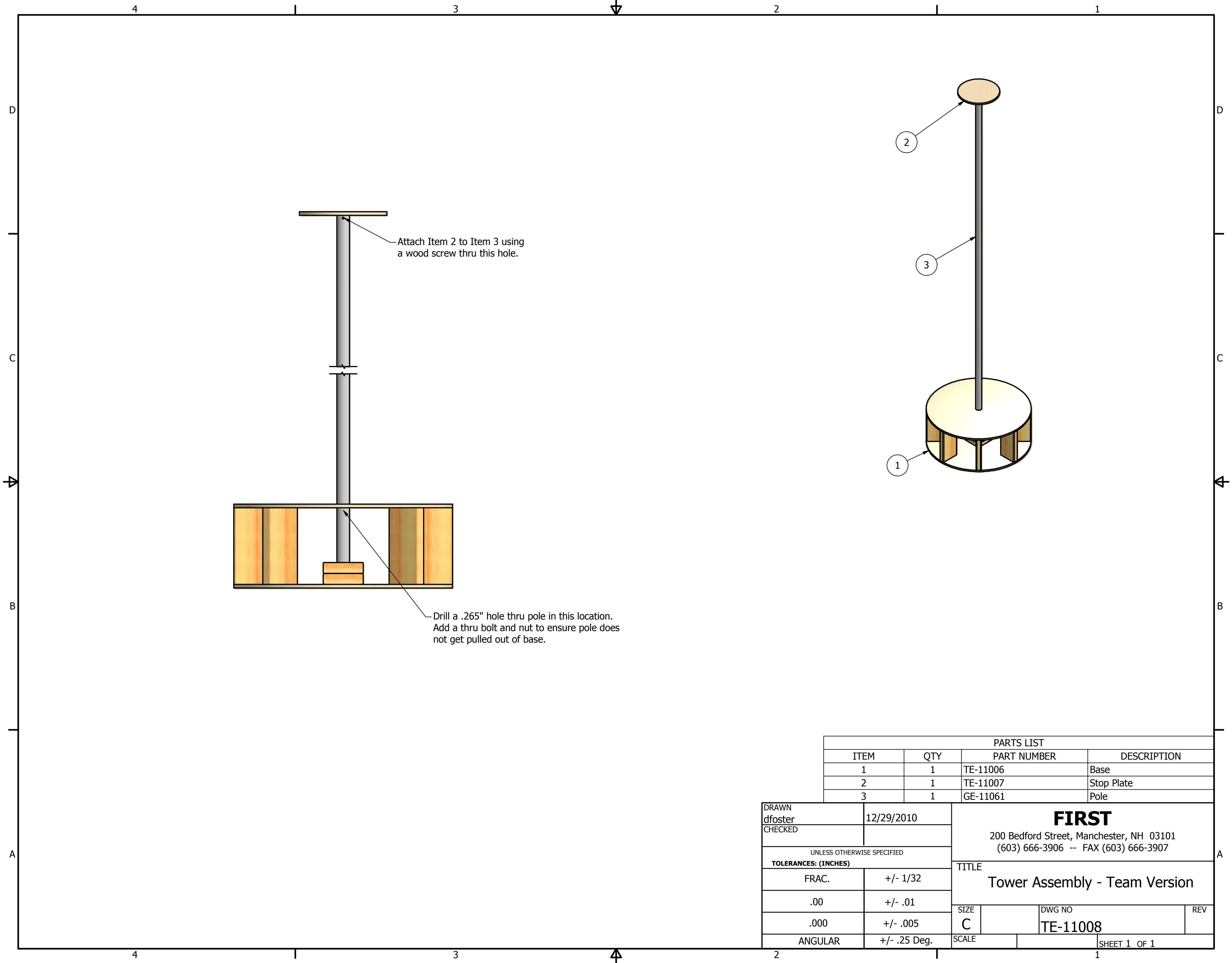




Resources		
Resource	Description	QTY.
1	1/2 thk plywood	AR
2	1-1/2" dia wooden dowel	2"

PARTS LIST			
ITEM	QTY	PART NUMBER	DESCRIPTION
1	1	TE-11007-01	Stop Plate
2	1	TE-11007-02	Dowel

DRAWN dfoster		12/15/2010		<div>FIRST</div> <div>200 Bedford Street, Manchester, NH 03101 (603) 666-3906 -- FAX (603) 666-3907</div>			
CHECKED							
UNLESS OTHERWISE SPECIFIED				TITLE <div>Stop Plate</div>			
TOLERANCES: (INCHES)							
FRAC.		+/- 1/32					
.00		+/- .01		SIZE B			
.000		+/- .005					
ANGULAR		+/- .25 Deg.					
				SCALE		DWG NO TE-11007	
						REV	
						SHEET 1 OF 1	



PARTS LIST			
ITEM	QTY	PART NUMBER	DESCRIPTION
1	1	TE-11006	Base
2	1	TE-11007	Stop Plate
3	1	GE-11061	Pole

DRAWN dfoster		12/29/2010		<div>FIRST</div> <div>200 Bedford Street, Manchester, NH 03101 (603) 666-3906 -- FAX (603) 666-3907</div>			
CHECKED							
UNLESS OTHERWISE SPECIFIED				TITLE <div>Tower Assembly - Team Version</div>			
TOLERANCES: (INCHES)							
FRAC.		+/- 1/32		SIZE C	DWG NO		REV
.00		+/- .01			TE-11008		
.000		+/- .005					
ANGULAR		+/- .25 Deg.		SCALE		SHEET 1 OF 1	